



Shefa Tourism

June 2016



EMAE AND TONGOA

The Shepherd Islands

EMAE ISLAND – ACCOMMODATION MAP



- Emae Sunset Bungalows ... **569 1407**
- Nampuawia Bungalow ... **779 7324** or **535 3655**
- Jaytee Homestay ... **778 7200, 544 0384** or **536 8105**
- L&Pako Homestay ... **776 1006**



EMAE SUNSET BUNGALOWS



Emae Sunset Bungalows, in Marae Village on the northern side of the island, began operating in 2010 and their tarpaulin-covered natangora roofs are a testament to cyclone Pam. They are basic but well positioned right on the edge of a coral beach.

There are two separate bungalows (each sleeping three in single beds), a dining room and a covered outdoor area where you can enjoy sea views and breezes.

The shared ablutions (toilet and shower) are in a separate building. Cost per person per night including all three meals is 2,000vatu.

If you're interested in going to Cooks Reef, Jimmy will be able to help you to arrange a trip.

Contact: **Jimmy Kalo**
Phone: (+678) **569 1407**



EMAE AND TONGOA

The Shepherd Islands

NAMPUAWIA BUNGALOW



Nampuwia is a bungalow newly-built since the cyclone in the little village of Finonge. Made from traditional materials with a natangora roof, coral floor and palm tree wooden walls, it has three rooms and sleeps up to three guests in single beds. The bungalow is set in a garden next to the owners' house. They also have a small store selling basic supplies.

The peaks of Mt Lasi (644m) and Mt Talimasa (434m) rise on either side of the bungalow and the sea is just a few minutes walk away - you can hear the surf breaking on the reef as you drift off to sleep at night. Cost per person per night including all three meals is 2,000vatu.

Contact: **James Willie**
Phone: (+678) **779 7324**



EMAE AND TONGOA

The Shepherd Islands

JAYTEE HOMESTAY



Jaytee Homestay is situated in Sangafa, the largest and prettiest village on Emae, set at the foot of one of the island's three steep hills.

Jaytee is built from traditional materials and has two rooms: a private dining room and a bedroom with two single beds. The standout feature is the shaded outdoor area that is shared with the owner, his family and neighbours. It's a social hub where guests can engage

with village life while still having access to their own space and privacy.

The beach is just a five minute walk from the village. On the way you can see the bones of a huge whale that washed ashore – ask Tom or one of the children to show you.

Cost per person per night including all three meals is 1,500 vatu

Contact: **Tom and Mary Peter**

Phone: (+678) **778 7200** or **544 0384** or **536 8105**



EMAE AND TONGOA

The Shepherd Islands

L&PAKO HOMESTAY



The village of Sangafa is the largest on Emae (population approximately 250) with neatly kept pathways, flowering hedges and pretty gardens. L&Pako Homestay is situated in the middle of it - a cute, single-roomed house built from local materials that sleeps two on mattresses on the floor. The owners live next door and guests have the use of their shower and toilet.

This is a wonderful way to experience village life and try your hand at traditional activities such as weaving. The beach is just five minutes walk away, offering safe swimming at high tide.

Cost per person per night including all three meals is 1,500vatu.

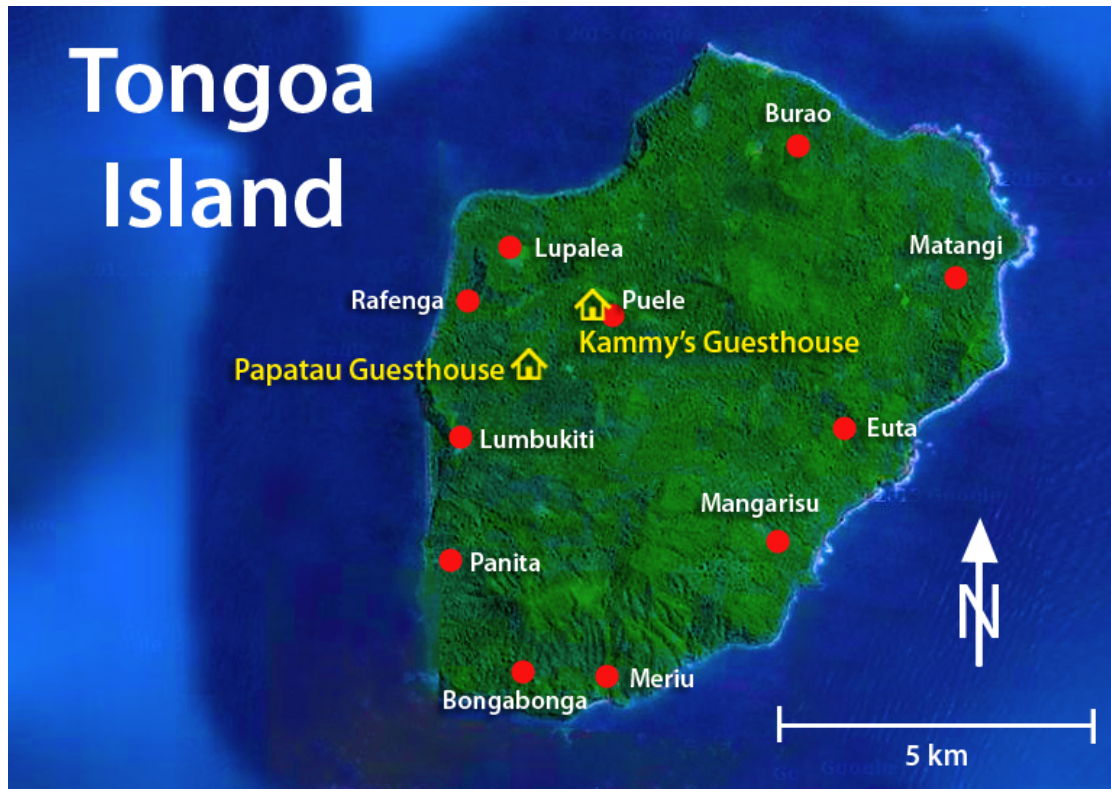
Contact: **Albert Sakari**
Phone: (+678) **776 1006**



EMAE AND TONGOA

The Shepherd Islands

TONGOA ISLAND – ACCOMMODATION MAP



- Papatau Guesthouse ... **543 9046**
- Kammy's Guesthouse ... **539 0212** or **537 4321**



EMAE AND TONGOA

The Shepherd Islands

PAPATAU GUESTHOUSE



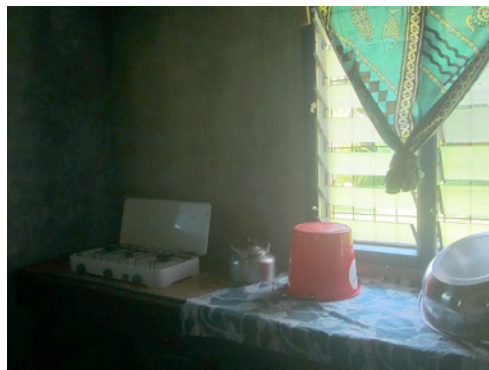
Papatau is a great little guesthouse situated on the road between Peule and Lumbukiti Villages. It is built of modern materials and has a new flush toilet and shower. Guests self cater in the well-equipped kitchen that has a gas bench top stove, and eat around a large table in the adjacent dining/sitting room.

There are two bedrooms, one with a double bed and one with a single bed and a single mattress on the floor. The

deep shaded veranda is a favourite space where you can sit waiting for a breeze whilst enjoying the lovely tropical gardens. The guesthouse has a remarkable solar power system that charges phone batteries in record time - an unexpected, welcome bonus when you've been away from Port Vila for a while. Cost per person per night (excluding meals) is 1,500vatu.

Contact: **George Michel**

Phone: (+678) **543 9046**



EMAE AND TONGOA

The Shepherd Islands

KAMMY'S GUESTHOUSE

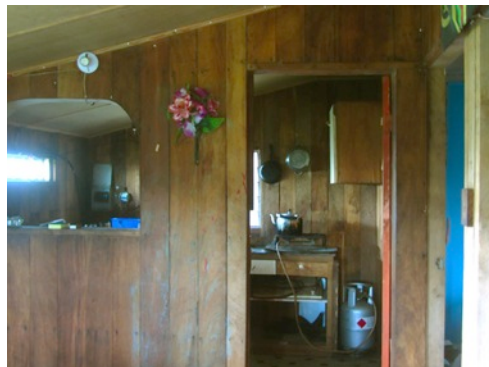


Kammy's Guesthouse is conveniently situated right next to the runway and within hailing distance of the airport. It is self-catering with a well-equipped kitchen including a gas bench top stove and utensils.

There's a small store attached to the airport building that sells fresh baked local bread, and in the evenings the mamas offer a selection of 20vatu kakae in a nearby kava bar.

The guesthouse has two bedrooms, one with a double bed and one with two singles. It has a communal sitting room furnished with a large table and chairs. The toilet and shower are in a separate building. Cost per person per night (with no meals) is 1,500vatu.

Contact: **Ruby and Kammy Kalo**
Phone: (+678) **539 0212** or **537 4321**



EMAE AND TONGOA

The Shepherd Islands

SHEPHERD ISLANDS TRAVEL INFO

Contacting the Bungalows

Cell phone reception is patchy on Emae and Tongoa. In addition people rely on solar and generators for power, so their phones may not be charged. If they don't answer, keep trying the number. Send a text. If you still can't get through, contact the Shefa Tourism Office on 5526028

Getting There

Air Vanuatu has flights from Port Vila to Emae and Tongoa, but not between the two islands. If you'd like to do the short island hop then have a look at Belair's options. They fly most days, weather permitting. Ring 29983 to check their timetable. If you need to charter a flight, Air Taxi has 5, 6 and 9 seater aircraft, talk to Meliana on 5544206.

It is possible for the truly intrepid to travel by boat such as *The Brooklyn* and *Island Claws*. Schedules tend to be erratic. If you're considering the seafaring option it would be worth investigating further, to be sure that you're ready for this kind of adventure.

Getting Around

Roads on Emae are flat and reasonably good, while those on Tongoa can be fairly rugged in parts of the island. Truck journeys between villages on both islands cost around 1,500vatu (per truck, not per person). Best to confirm a price upfront with the driver before you set off.

Mataso and Makura

The islands of Mataso and Makura form an enticing backdrop to the beach on the south-eastern side of Emae. Boats travel to both islands from Finonge. A chartered trip to either island can be organised for 5000 vatu, or you can travel with the locals for 500 vatu each way. But a word of caution here, unless you're a hardened sailor looking for excitement, choose a day when the sea is calm.



SHEPHERD ISLANDS TRAVEL INFO

Electricity

Solar power is mostly used. It's a good idea to fully charge your phone and camera before you travel.

Telecommunications

Although there is phone coverage with both the TVL and Digicel networks, reception can be extremely unreliable.

Travellers Tips:

- You can never have enough insect repellent. Mosquitoes abound on both Emae and Tongoa. Check with your doctor about taking anti-malaria medication.
- The usual outer island rules apply - dress appropriately. When visiting villages women should wear knee length dresses (or sarongs over shorts). Don't pack your bikini. Acceptable 'klos blong swim' are long shorts and a T-shirt or something similarly modest.
- Snorkels will be useful on Emae, sunscreen essential on both islands.
- Pack a solar light or torch, a small padlock in case the door of your room or bungalow doesn't have one, soap, toilet paper and a towel.
- Take your phone charger, you may find you are able to charge it in unexpected places. Actually getting reception could prove challenging. TVL tends to work better on Emae.
- There are no ATMs in the outer islands, plan accordingly taking emergencies into account



EMAE AND TONGOA

The Shepherd Islands