



Shefa Tourism

June 2016



NGUNA ISLAND

North Efate offshore islands

NGUNA ISLAND – ACCOMMODATION MAP



- Uduna Cove Beach Bungalows ... **776 6263**
- Mangamus Bungalow ... **711 3443**
- Nakie Women's Guesthouse ... **711 3375**
- Island Breeze Guesthouse ... **772 6488** or **777 1606**
- Paunvina Guesthouse ... **541 9486** or **534 8523**
- Mere-Sauwia Village Homestay ... **779 0374**



NGUNA ISLAND
North Efate offshore islands

UDUNA COVE BEACH BUNGALOWS



This cluster of five brightly painted blue and yellow bungalows is situated on the edge of the long stretch of white sand beach that runs from Naugisutare Point between Unakapu and Taloa Villages all the way to Black Stone. It's tucked into the bush about a 10 minute walk from Taloa Village. The area in front of the bungalows is a marine reserve, good for swimming and snorkelling. This is perfect for those wanting a peaceful island

beach getaway. Uduna is rated the number one accommodation on Nguna by TripAdvisor. The bungalows sleep up to 20 guests in various configurations of single and double beds. Price: 3,500 vatu per person per night, including breakfast and dinner. Lunch is an additional 500 vatu.

Contact: **Emma Sisi**

Phone: (+678) **776 6263**



NGUNA ISLAND

North Efate offshore islands

MANGAMUS BUNGALOW



Mangamus is a cute, single-roomed bungalow set right on the beach, a five minute stroll from Taloa Village. It sleeps two in a double bed and a single mattress can be supplied, if required. There's a separate ablution block consisting of a bucket flush toilet and bucket shower.

The area directly in front of the bungalow is a marine conservation area, good for swimming and Joel offers snorkelling tours. Other activities include exploring Taloa Village and a volcano trek that provides stunning views of the Shepherd Islands. Cost per person, including three meals, is 3,500 vatu a night.

Contact: **Joel Kalfau**

Phone: (+678) **711 3443**



NGUNA ISLAND
North Efate offshore islands

ISLAND BREEZE BUNGALOW



Island Breeze Bungalow is situated right on the water with views to Pele Island and across Undine Bay. You can watch both the sunrise and sunset from a hammock on the veranda.

The guesthouse has two bedrooms, each with a double bed; an additional single bed can be provided if required.

There's a large common room for relaxing, with an indoor flush toilet and hot water shower. A kitchenette (with a

gas stove) means you can self cater if you like, or delicious lunches and dinners made from fresh local ingredients can be provided by your hosts. The daily tariff includes breakfast.

Cost per person per day is 4,500 vatu. Wifi is a one-off cost of 1,000 vatu per device, payable to the nearby Eles School.

Contact: **Leiman Matuel**

Phone: (+678) **772 6488** or **777 1606**



NGUNA ISLAND

North Efate offshore islands

NAKIE WOMEN'S GUESTHOUSE



This community-owned guesthouse is run by the women of Taloa Village. Staying here is immersion, a wonderful opportunity to experience village life. You can take part in activities such as weaving, cooking, painting and sewing, visit the school and go to church. You can also swim and snorkel at the nearby beach and marine reserve and do a volcano trek. The guesthouse has two bedrooms, one with a double bed and

one with two singles; plus a large communal space that sleeps up to ten people on mattresses on the floor, making it ideal for groups. The women of Taloa collectively provide delicious meals prepared from fresh, local ingredients. The guesthouse also has a large, well-equipped kitchen which guests are welcome to use. Price: 3,500 vatu per person per night, including three meals.

Contact: **Susan Sisi**

Phone: (+678) **711 3375**



PAUNVINA GUESTHOUSE

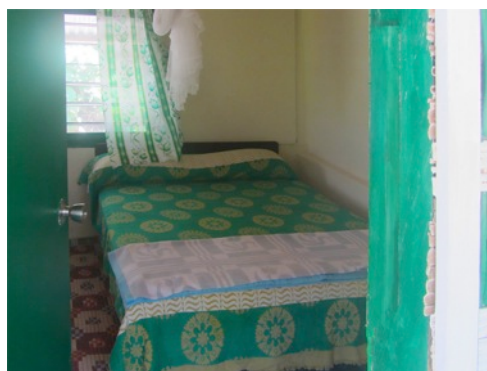


Paunvina Guesthouse is set in the bush overlooking the sea with views across to Emau and Pele Islands. Its unique offerings are a library for guests and Leipakoa's famous chocolate-filled kato, which she serves up for breakfast. A road passes in front of the guesthouse. A stroll in one direction takes you into the heart of Unakapu Village. Head off the in the other and you'll come to Naugisutare Point near the school, which

is good for swimming. On the way you'll find John's kava bar, the place to be at sunset. Paunvina Guesthouse consists of three rooms - one with a double bed, one with two singles, and a third with bunks and a single bed - sleeping up to seven guests. In addition there are two single beds in a room adjoining the library. Price: 3000 vatu per person per night, including three meals.

Contact: **Taris Charlie** or **Leipakoa**

Phone: (+678) **541 9486** or **534 8523**



NGUNA ISLAND

North Efate offshore islands

MERE-SAUWIA VILLAGE HOMESTAY



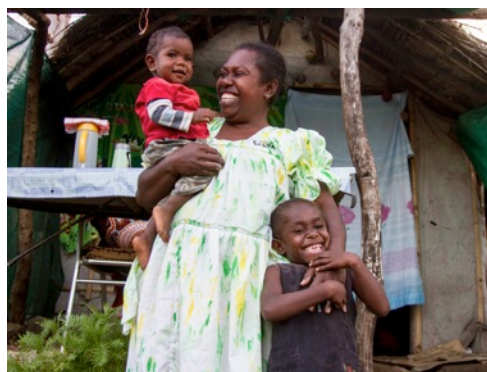
Mere is a small inland village set in a conservation area on the way up to the volcano. The sea is accessible, although it involves a bit of a walk and navigating a steep path down to the black sand beach. This is the ultimate homestay for people wanting an authentic local experience. Each guest is assigned a host family and you are very much part of the community. There are ten single room bungalows scattered throughout

the village, all traditional-style leaf houses constructed of local materials. One has a double mattress on the floor, the others all have one single bed inside (additional mattresses can be added to suit). Price: 2,500 vatu per night, including three meals.

Porter to carry your luggage from the boat to the village (should you need help - it's a 45 minute walk): 500 vatu each way.

Contact: **Taman**

Phone: (+678) **779 0374**



NGUNA ISLAND

North Efate offshore islands

NGUNA ISLAND TOURS



Mangamus Snorkelling Tours

The area in front of Mangamus Bungalow and Uduna Cove Beach Bungalows is a marine reserve. Joel will take you on a snorkeling tour.

Adults: 500vatu Children: 200 vatu
Boat transport from Emua Wharf can also be arranged (an additional cost).

Contact: **Joel Kalfau**

Phone: (+678) **711 3443**

Maron Volcano Tour

Nguna has two extinct volcanoes, Mt Taputaora (593m) and Mt Marrow (472m)
The reward for climbing them is panoramic views of the Shepherd Islands.

Contact: **Tane Kalo**

Phone: (+678) **711 0422**



NGUNA ISLAND

North Efate offshore islands

NGUNA ISLAND TRAVEL INFO

Contacting the Bungalows

Cell phone reception is patchy on Nguna. In addition people rely on solar and generators for power, so their phones may not be charged. If they don't answer, keep trying the number. Send a text. If you still can't get through, contact the Shefa Tourism Office on 5526028

Boat Transport

Boats from Emua Wharf cost between 3,000 vatu each way as a charter (up to 15 pax) or 500 vatu per person when travelling as a local (ie. the boat leaves when it is full and doesn't run to any sort of timetable). Be sure to tell the boat driver where you are going to be staying so they can drop you off at the point closest to your accommodation.

Travel Tips

- Safe parking and clean toilets are available at Emua Wharf. Situated on the opposite side of the ring road, the toilets (in a small yellow building) cost 50 vatu a visit and overnight parking is 500 vatu.
- Emua Road Market is worth checking out for fresh fruit, green coconuts and local snacks.

Electricity

Solar power and occasionally generators are used. It's possible to charge your phone, camera and laptop at Eles School's computer lab. Cost from 20 – 50 vatu per device.

Telecommunications

Although there is phone coverage with both the TVL and Digicel networks, reception can be unreliable. Internet is available at Eles School at a cost of 100 vatu for 15 minutes.

Respecting Local Culture

- The people on Nguna are used to tourists and very forgiving of inadvertent cultural transgressions. Even so, for women to wander through a village wearing bikinis or skimpy clothing is really inappropriate. Taloa Village is particularly conservative.
- You'll be welcome to walk about the island, but seek information from your bungalow owner first. They'll often send a pikinini along with you as a guide.
- As a rule NiVanuatu love having their photos taken, especially the children, nonetheless, please ask permission.



NGUNA ISLAND
North Efate offshore islands

NGUNA ISLAND TRAVEL INFO

Responsible Tourism

Nguna is small island and waste management is an issue. The Shefa Tourism Office encourages visitors to take plastic bottles and other inorganic waste that they generate (including used disposable nappies) back to Port Vila with them where they can be disposed of properly.

Things to consider bringing when staying at an island bungalow

- Enough money in cash. There won't be any banks or ATMs.
- A torch or solar light.
- Snacks. There are a few stores in the villages, but stocks are very limited.
- Bottled water for drinking.
- Your choice of sundowner if you're not keen on trying kava.
- Insect repellent.
- Sunscreen and hat.
- An umbrella (for rain and sun).
- For women, a sarong to wear over shorts in the villages.
- A book.
- Anti malaria tablets (check with your doctor).
- Basic first aid kit - i.e. plasters, Panadol, disinfectant.
- Toiletries - soap, toothpaste, toilet paper.



NGUNA ISLAND

North Efate offshore islands