



Shefa Tourism

June 2016



EFATE ISLAND

EFATE – ACCOMMODATION MAP



- Lucia Guesthouse (Pango Village) ... **549 5793**
- Jabsina Guesthouse (Pango Village) ... **548 4969**
- Paray Lodge (Port Vila) ... **26289**
- Traveller's Oasis Lodge (Port Vila) ... **710 2839**
- Freshwota Lodge (Port Vila) ... **779 2979**
- Fakasei Lodge (Mele Village) ... **541 9295**
- Havannah Eco Lodge (Havannah Harbour) ... **541 9949**
- Vata-pau Bungalows (Emua Village) ... **546 2052**
- Raymond's Bay View (Emua Village) ... **710 0969**
- Nicky's Bungalow (Emua Village) ... **534 1125**
- Malowia Guesthouse (Paunangisu Village) ... **777 4091**



LUCIA GUESTHOUSE – PANGO VILLAGE



Lucia Guesthouse offers self-catering accommodation in heart of Pango Village. It's a cute little cottage, light and bright with fully screened windows. The well-equipped kitchen includes a gas stove and oven, and there's a washing machine outside on the back veranda. The guesthouse sleeps up to four in two compact bedrooms, one with a double bed and one with double bunks. There's a small sitting room and an inside

bathroom comprised of a toilet and cold water shower. The shaded front veranda is a wonderful place to relax and enjoy the spacious tropical gardens. The beach is in easy walking distance, as is the main road where guests can catch a bus into Port Vila. POA, with discounted rates for extended stays.

Contact: **John and Julie Kalsrap**

Phone: (+678) **549 5793**



PARAY LODGE – PORT VILA



Paray Lodge is conveniently situated in the quiet, suburban Nambatu Area of Port Vila, a 20 minute walk or 5 minute bus ride into town. It's perfectly suited for travellers who are looking for a friendly, authentic, locally-owned place to stay. It provides a range of accommodation options including dormitories, rooms with shared bathroom facilities and one room with its own ensuite. There is a fully equipped

communal kitchen and dining area in a garden setting. A large supermarket and several restaurants are all within easy walking distance. Paray Lodge offers hot water showers, laundry facilities, free wifi and free parking. For rates and more information see their website: <http://paraylodge.com.vu>

Contact: **Josephine and Joana**

Phone: (+678) 26289



TRAVELLER'S OASIS LODGE – PORT VILA

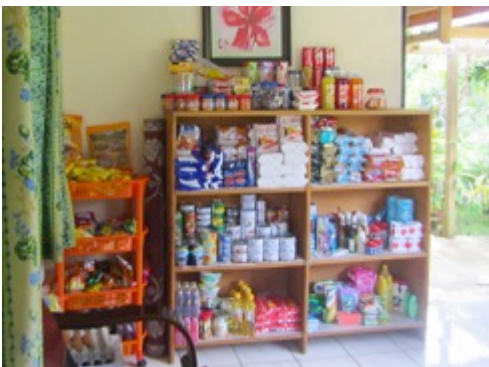


Traveller's Oasis Lodge accommodates up to 20 people. It is situated in the Stade Area of the Port Vila suburbs, about 15 minutes walk from the heart of Port Vila town. It consists of two self-contained ensuite bedrooms, and five rooms in single, double and triple configurations that share two separate bathroom facilities (one male one and female). The Lodge has a fully equipped kitchen with a covered outdoor dining

area next to it. A small convenience store is located in the reception. There is a lovely garden for guests to enjoy. Free wifi and daily house keeping are provided. The grounds are fully fenced and a security guard is on duty after hours. Reception is open from 6.30 am to 10.00 pm. Transport to and from the airport can be arranged.

Contact: **Menzies Samuel**

Phone: (+678) **710 2839**



FRESHWOTA LODGE – PORT VILA



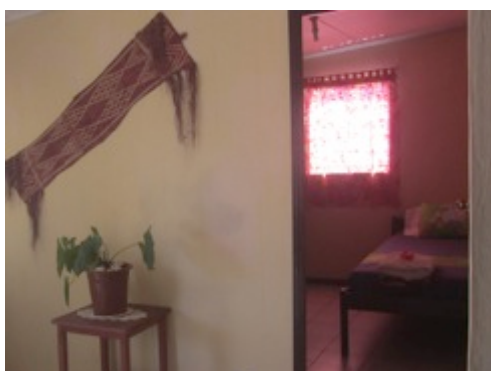
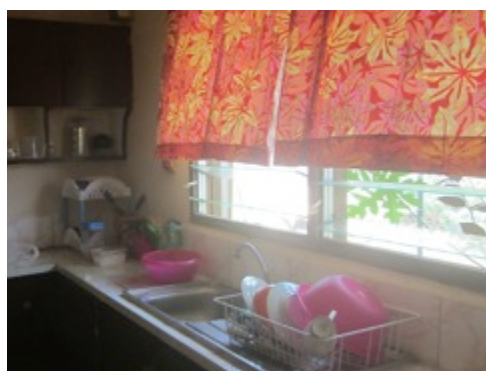
Freshwota Lodge is situated in the vibrant Port Vila suburb of Freshwota. It has four rooms with single, double, triple and family configurations, sleeping up to nine people. Bathroom facilities are shared. There's a comfortable, well furnished sitting room and a nakamal in the garden where guests can relax. Free wifi is available.

The guesthouse is self-catering and has a fully equipped kitchen, with the

Freshwota market, a supermarket and several stores in the vicinity to stock up on supplies. Alternatively, next door is the well-known John Tari Nakamal, as popular for the 20 vatu local food that the mamas sell, as for its kava. A washing machine and laundry tub are available for guests to use. Cost per person per day is 1,500 vatu, negotiable for longer stays.

Contact: **Melcon Aru**

Phone: (+678) **779 2979**



EFATE
Accommodation

HAVANNAH ECO LODGE – WEST EFATE



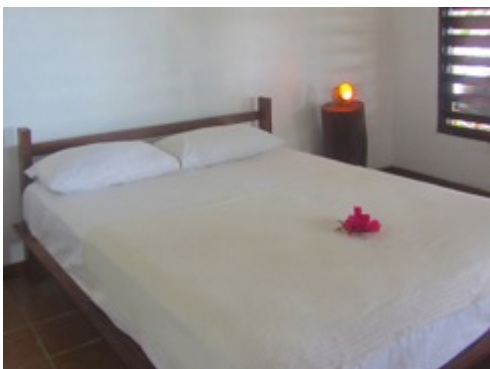
Havannah Eco Lodge consists of six self contained units, all with ensuite bathrooms and spacious covered outdoor terraces facing the water. They're tucked into the bush on the edge of the beautiful Havannah Harbour. Each bungalow sleeps two people in a double bed and additional single beds are available on request. There are BBQ facilities and basic crockery and cutlery with coffee, tea and

sugar provided free of charge. Meals are available in Gideon's Restaurant and Bar, situated in the Eco Lodge's grounds just a moment's walk from the bungalows. Transfers can be arranged from the airport. For rates and more information, see the website:

www.havannahecolodge.com

Contact: **Gideon George**

Phone: (+678) **710 0969**



MALOWIA GUESTHOUSE - PAUNANGISU



Malowia Guesthouse is set in beautiful tropical gardens just moments from the beach, with safe swimming, stunning views of offshore islands and amazing sunsets. It offers clean, comfortable accommodation; fresh, organic local food; running water and basic solar power. Situated, as it is, on the edge of Paunangisu Village, it's also a unique opportunity to experience traditional Vanuatu life. It sleeps up to 7 people in

two bright airy bedrooms, one with a double and a single bed, one with a double bed and bunks. Guests have the option to self cater in the kitchenette, although Janet is well known for her cooking and all meals can be provided. See www.malowiaguesthouse.com for more details. The cost of 4,000 vatu per person per night includes all three meals.

Contact: **Janet Bunyan**

Phone: (+678) **777 4091** or **598 9809**



RAYMOND'S BAY VIEW – EMUA VILLAGE



Raymond's Bay View is a traditional bungalow constructed from local materials, set in a pretty garden. Its location is fantastic, a beach-front position in the heart of Emua Village. Guests can enjoy sea breezes and views of offshore islands across Undine Bay from the shady veranda, and still feel a part of village life.

The bungalow sleeps three in a double and a single bed. All three meals can be

provided, or guests can choose to eat lunch and /or dinner at the nearby Orovy Beach Restaurant. Emua Wharf is in easy walking distance, making day trips to Nguna and Pele Islands very accessible. A great place to base yourself in North Efate.

Cost per person per day including all meals provided by Doroline is 3,500 vatu.

Contact: **Tony and Doroline Raymond**

Phone: (+678) **710 0969**



NICKY'S HOMESTAY – EMUA VILLAGE



This is a wonderful way to experience village life. Nicky's Homestay is situated in Emua Village, an easy 45 minute drive from Port Vila. Pheppie and her family will look after you in a cute, stand-alone house next door to their home. It has two rooms, one with a double and one with a single bed. The beach is just moments away.

You will be able to join in family life and help to prepare your meals in

the traditional NiVanuatu way. Alternatively you can take a stroll to the nearby locally-owned Orovy Beach Restaurant or the Emua.

Cost per person per night including three meals provided Pheppie is 3,500 vatu.

Contact: **Ben and Pheppie Frank**

Phone: (+678) **534 1125**



NORTH EFATE

Accommodation, Tours and Attractions

OROVY BEACH RESTAURANT & BAR



Orovy Beach Restaurant & Bar offers relaxed beachfront dining. It's North Efate's newest restaurant. 100% locally owned and situated in the north western corner of Emua Village, it boasts gorgeous views of the offshore islands floating on the sparkling blue waters of Undine Bay. With both an à la carte menu and a buffet, it's an ideal spot for a round-island lunch stop. Or a snack. Or a cold Tusker while watching golden

sunsets from the beach. Chef Kai also runs popular cooking classes. For more details see: www.oroxybeachrestaurant.weebly.com Open 7 days a week, from 9.00 am - 3.00 pm Breakfast and dinner are available by arrangement (bookings only).

Contact: **George or Jenny**

Phone: (+678) **731 6597** or **540 0266**



EPULE RIVER TOURS



Lynda Epule Tour Project

Travel in an outrigger canoe, under the bridge and down the river until you reach Epule Village. Here you are welcomed ashore and treated to kastom dancing from the Shepherd Islands. The tour ends with refreshments of fresh fruits and vegetables cooked island-style. Duration approximately one hour.

Contact: **Daniel Kalmaire**

Phone: (+678) **731 9776** or **598 9838**

Vallee Awia Jungle Tour

Jack does a very personalised Epule River tour. Both his traditional dress and outrigger canoe make you feel as though you're adventuring in a different world.

Contact: **Jack Willie**

Phone: (+678) **591 6398**



PEPEYO CULTURAL & EDUCATIONAL TOUR



Pepeyo Cultural Tour is a fascinating, visual and interactive way to discover the culture of the island of Futuna in Vanuatu's Southern Province. It's situated in Teouma, about 20 minutes drive south from Port Vila on the ring road. Visitors are guided through a series of tableaux, eight areas depicting aspects of traditional NiVanuatu way of life, history and culture. The tour continues with kastom dancing and a

demonstration of walking on hot coals, and finishes with a performance of bottle & bamboo music. There are short easy walks through the bush between areas (accessible by wheelchair) with plenty of seating and shade. Fun for all ages! For more information see the website: <http://pepeyotour.weebly.com>

Contact: **Mahlon**

Phone: (+678) **779 9130**



ROUND ISLAND TOURS



John's Authentic Island Tours

FULL DAY: 8.30 am - 5.30 pm

Tours run Monday, Wednesday & Friday

- Hotel pick-ups and drop-offs
- Activ Chocolate Factory
- Cultural Village
- Village School
- Blue Lagoon (swimming)
- Natural Hot Pools
- Lunch at a local restaurant

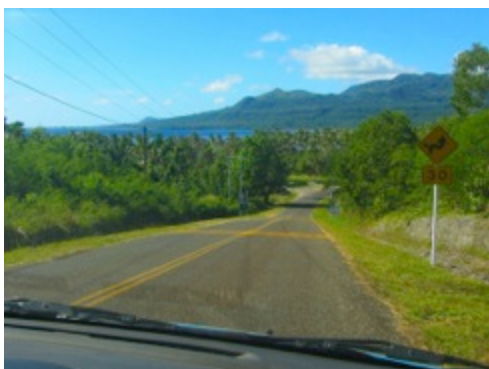
- Afternoon tea at Survivor Beach | World War 2 relics | Mele Lookout

Bring swimming gear, hat, sunscreen, cash for chocolate and souvenirs. See the website for more information: www.authenticislandtours.weebly.com

ADULTS: 8,000 vatu | CHILD: 4,000 vatu (*Under 12 years, under 5 years free*)

Contact: **John Tamara**

Phone: (678) **540 7386** or **775 5193**



EFATE
Round Island Tours

ROUND ISLAND TOURS



Manples Tours

Jonah John, also known as JJ, and his wife, Violet, run Manples Tours.

"Manples" is a Bislama word meaning "local". The Manples Round Island Tour is a discovery of the abundance of nature, custom and history on the island of Efate. It is 100% locally owned and operated. When you do this tour you benefit the community.

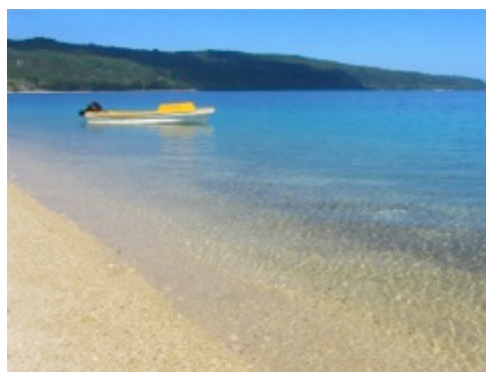
JJ is bilingual (English and French). His

tour takes in all the main attractions on Efate and is recommended on TripAdvisor – all his reviews are excellent! See: www.manples-tours.weebly.com for more information.

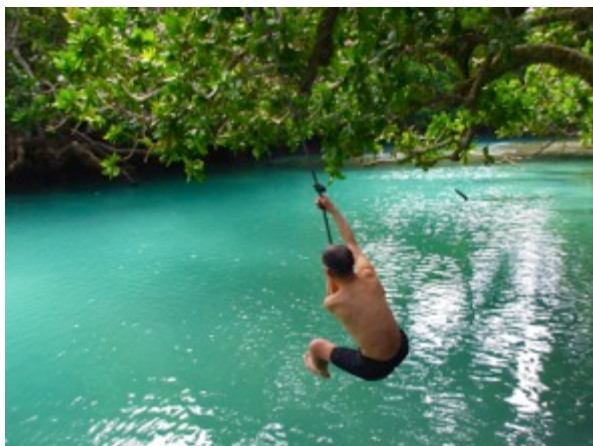
ADULTS: 7,500 vatu | CHILDREN: (*12 years and under*) 3,750 vatu

Contact: **Jonah John**

Phone: (678) **779 4826** or **561 4190**



ROUND ISLAND TOURS



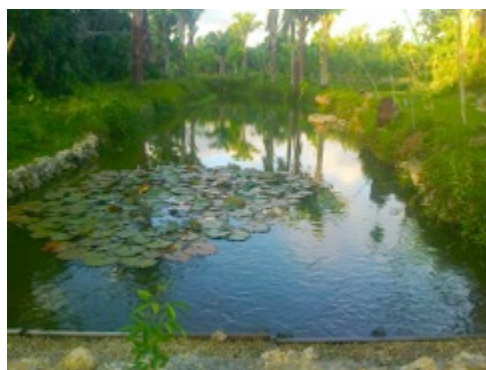
Couleurs des Iles Tours

Looking to discover Vanuatu? Come and enjoy your holiday with Couleurs des Iles Tours. Let us help you explore Efate. We are 100% locally-owned and we know our islands best! We offer Efate full day round-island tours and half day tours. We can arrange Cascades waterfall tours, fishing tours, snorkelling tours, museum tours, kava tours, cultural village tours and city tours, as well as full

day cruises and sunset cruises. We can also organise tours to the Tanna and Ambrym volcanoes. Or you can design your own tour. Just let us know what you want to do and we'll do the rest. Bilingual (French and English). See www.couleursdesiles.weebly.com for more information.

Contact: **Renata Maguekon**

Phone: (678) **591 5510** or **563 1536**



EFATE
Round Island Tours